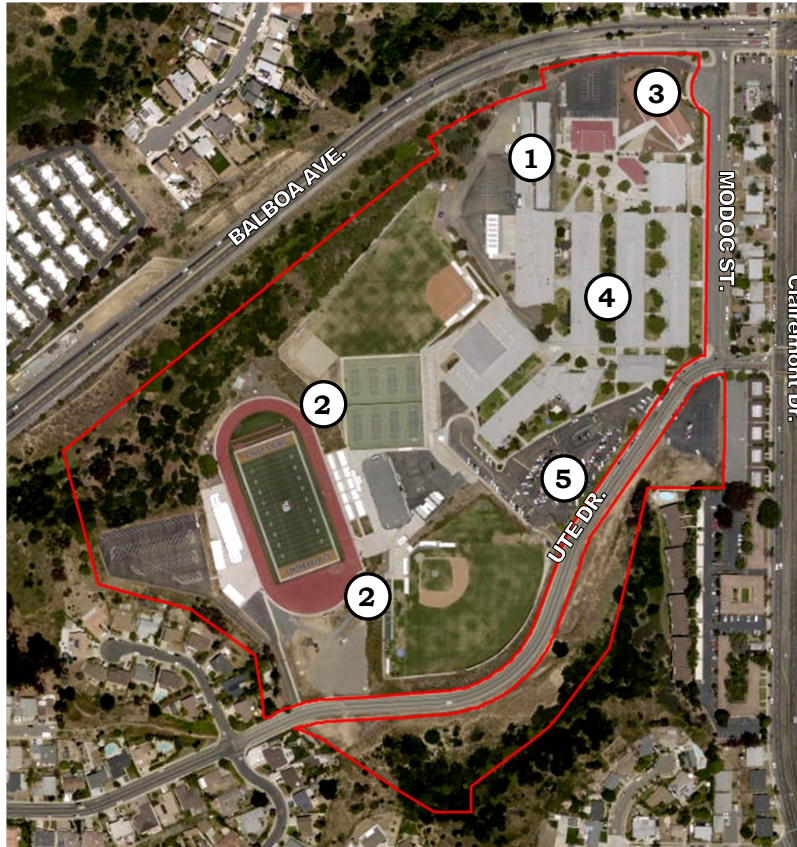




# Clairemont High School

4150 Ute Dr.  
San Diego, CA 92117



Sub-district: A  
Cluster: Clairemont  
Year School Opened: 1958  
Grades: 9-12

- ① Automobile Technology Facility
- ② Athletic Fields & Facilities Upgrades —  
New Football, Baseball, and Softball  
Stadiums
- ③ Academy of Business Building
- ④ Classroom Interior Remodel
- ⑤ Parking Lot Landscaping Improvements

Situated near the intersection of Balboa Avenue and Clairemont Drive and located only two miles from the Pacific Ocean, Clairemont High School has been at the heart of the Clairemont community for more than 50 years since its opening in 1958. The school has an accreditation from the Western Association of Schools and Colleges.

The 36.31-acre school is comprised of 28 permanent buildings, 17 portables, a newly constructed football stadium, a baseball field, tennis courts, and a softball field. The campus also includes a gym with attached weight room, library, auditorium, state-of the art auto shop, and amphitheater. The approximately 1,100 students have access to a number of unique features, including the county's only functioning high school astronomy observatory, the largest presidential memorabilia museum west of the Mississippi, and a lily pond garden that serves as aesthetic enjoyment and a hands-on science lab. Additionally, the grounds feature many student-made art pieces and murals and a commemorative monument to alumni who were killed in the Vietnam War.



# Clairemont HS Automotive Technology Facility

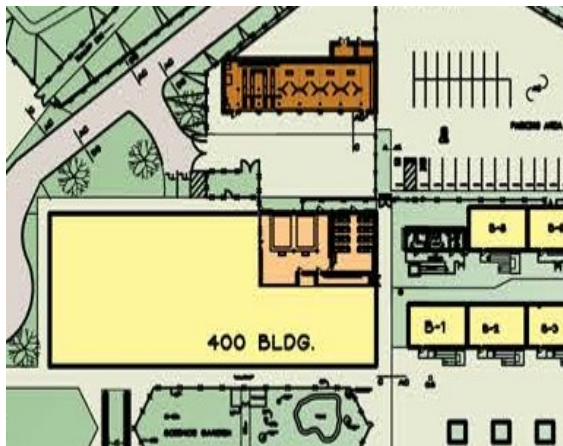




## Clairemont HS Automotive Technology Facility



Roll-up doors and bays



Site plan section with auto facility and classroom locations

Completed: November 2011

Funding: Proposition S and California Proposition 1D Grant

The 3,475-square-foot, state-of-the-art Automobile Technology Facility is part of the district's College, Career & Technical Education (CCTE) program. This professional facility and accompanying classroom/lab will help prepare students for work in the commercial automotive industry, enabling instruction and practice in such areas as engine performance, steering and suspension, electrical and mechanical components, and brakes. The project was designed with information provided by a task force comprised of members from various commercial automotive fields.

Project features include:

- Six auto bays with roll-up doors
- Two scissor lifts with computerized wheel alignment and four two-post lifts
- Tire machine and on-car brake lathe
- Remodeled 3,420-square-foot auto shop in Building 400 that accommodates a 32-student classroom and a two-bay lab area used for engine performance and diagnostics
- Industry-standard facility that supports certification by the National Automotive Technicians Education Foundation

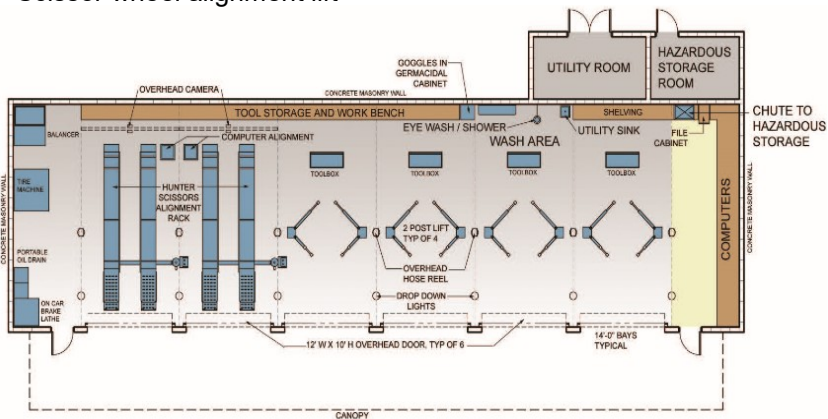
# Clairemont HS Automotive Technology Facility



Hydraulic two-post lift



Scissor wheel alignment lift



Floor plan



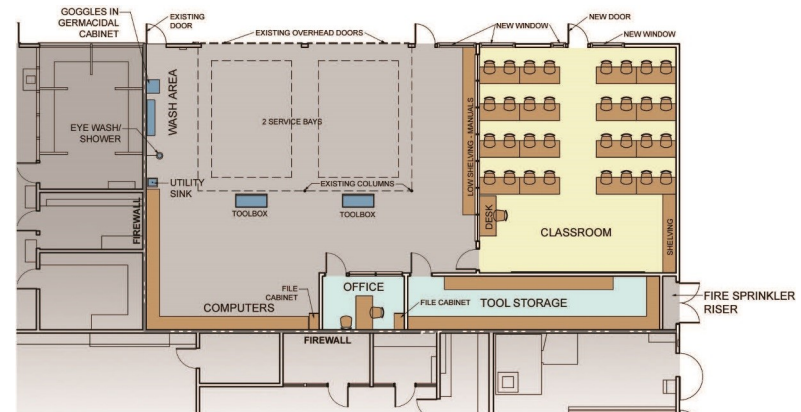
# Clairemont HS Automotive Technology Facility



Remodeled existing auto shop in Building 400



Building 400 classroom



Floor plan



# Clairemont HS Stadium, Track, Softball & Baseball Field Upgrades





# Clairemont HS Stadium, Track, Softball & Baseball Field Upgrades

Completed: December 2011

Funding: Proposition S

This 3.65-acre stadium includes installation of new artificial turf, a nine lane all-weather track, and 5,533 square feet of athletic facility upgrades compliant with the Americans with Disabilities Act (ADA). In addition, upgrades were made to the existing softball and baseball stadiums.

## Football Stadium

- Approximately 1,600 capacity bleachers on home side and 800 capacity on visitors' side
- Home side concession stand, ticket booth, and announcer's booth
- Visitor's side accessible parking, restrooms, concession stand and ticket booth
- Athletic equipment storage building and field lighting
- Scoreboard

## Softball and Baseball Fields Upgrades

- The 1.91-acre softball field received accessible bleachers (200 seating), accessible dugouts, a scoreboard, announcer's booth, and ADA upgrades
- The 2.96-acre baseball field was rotated 180 degrees to minimize retaining walls and now includes accessible bleachers (200 seating), accessible dugouts, announcer's booth, scoreboard, and ADA upgrades



Home side bleachers and announcer's booth

# Clairemont HS Stadium, Track, Softball & Baseball Field Upgrades



Visitor bleachers



Nine-lane all-weather track



Electronic scoreboard



Visitor ticket booth, concessions, and storage



Home ticket booth





# Clairemont HS Stadium, Track, Softball & Baseball Field Upgrades



Baseball dugouts, backstop, lights, and announcer's booth



Baseball outfield fence and scoreboard



Bleachers, announcer's booth, backstop, and dugout



Scoreboard

# Clairemont HS Stadium, Track, Softball & Baseball Field Upgrades



Athletic fields, 2010



New stadiums and facilities



# Clairemont HS Academy of Business Facility





## Clairemont HS Academy of Business Facility

Completed: September 2015  
Funding: Propositions S and Z

The Academy of Business (AOB) is a 10,000-square-foot, College, Career & Technical Education (CCTE) project that includes a central space with a mock investment house and trading floor. The space, which includes digital ticker tape displays, features work terminals allowing students to access up-to-date financial data. The building houses the Academy of Business school, a finance-centered program of studies. Students learn about stocks and bonds, investing, and trading, giving them the experience of working in the simulated environment of an investment house or trading floor.

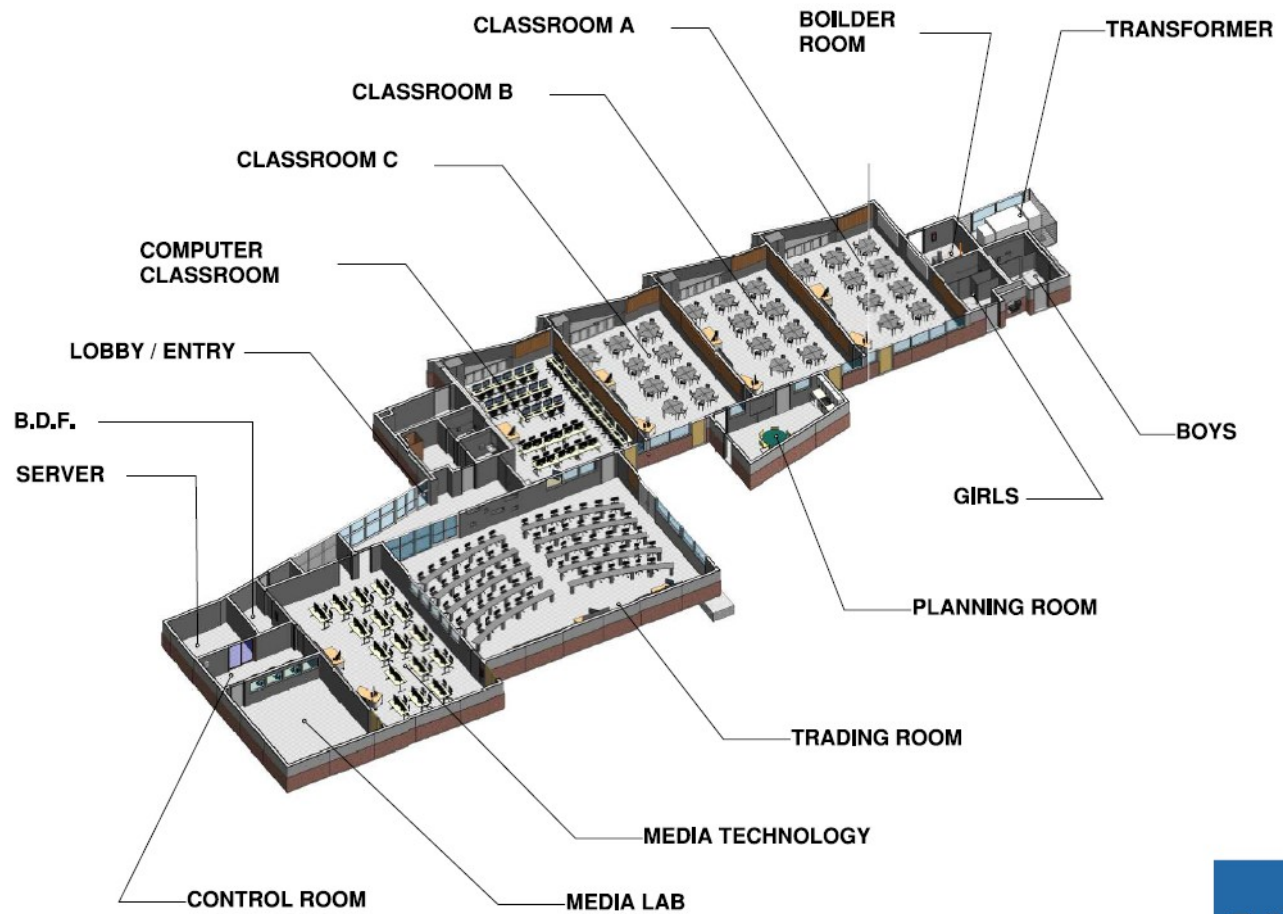


Rear entrance

# Clairemont HS Academy of Business Facility

## AOB Features

- One large trading classroom
- One computer classroom
- Three general purpose classrooms
- One media technology classroom
- Soundproof media lab with a control room
- Three multi-media editing bays and one soundproof studio editing bay
- Server room with a dedicated 24-hour climate control system
- Staff planning room
- Landscaping



3D floor plan



## Clairemont HS Academy of Business Facility



Main entrance and landscaping



Staggered façade design feature



Rear entrance with Academy of Business signage



Additional decorative signage at rear entrance



# Clairemont HS Academy of Business Facility



Trading floor panorama



Computer stations



Digital ticker tape displays



## Clairemont HS Academy of Business Facility



Classrooms feature air conditioning, natural lighting, and i21 technology



Planning room



One of three general purpose classrooms



## Clairemont HS Academy of Business Facility



Media lab/TV studio



Control room



Broadcast set



## Clairemont HS 2.0 Interior Upgrades

Completed: October 2016

Funding: Proposition Z

The Clairemont High School 2.0 project addresses the need for repair/renovating and upgrading of the interior spaces of the classrooms, auditorium and administrative offices. This project is in alignment with the district's need to improve the learning environment, health, safety and security of its students. The following items were addressed in this project:

- Prepare and paint existing walls
- Install new carpet
- Replace ceiling tiles
- Provide new furniture, fixtures and equipment for all renovated areas
- Install new window treatments
- Technology upgrades in some classrooms
- Wireless Access Points in renovated areas
- New exterior graphics and signage



# Clairemont HS 2.0 Interior Upgrades



Remodeled Classrooms



Remodeled Administrative Offices



Remodeled Administration Lobby



Remodeled Administration Lobby







# Clairemont HS

## Parking Lot Landscaping Improvements



Completed: March 2020  
Funding: Proposition Z

This project makes needed repairs and provides new hardscape to the parking lot and drought resistant landscaping. These improvements will be at the existing slope and planter at the front parking lot.



Site Plan



# Clairemont HS Parking Lot Landscaping Improvements

