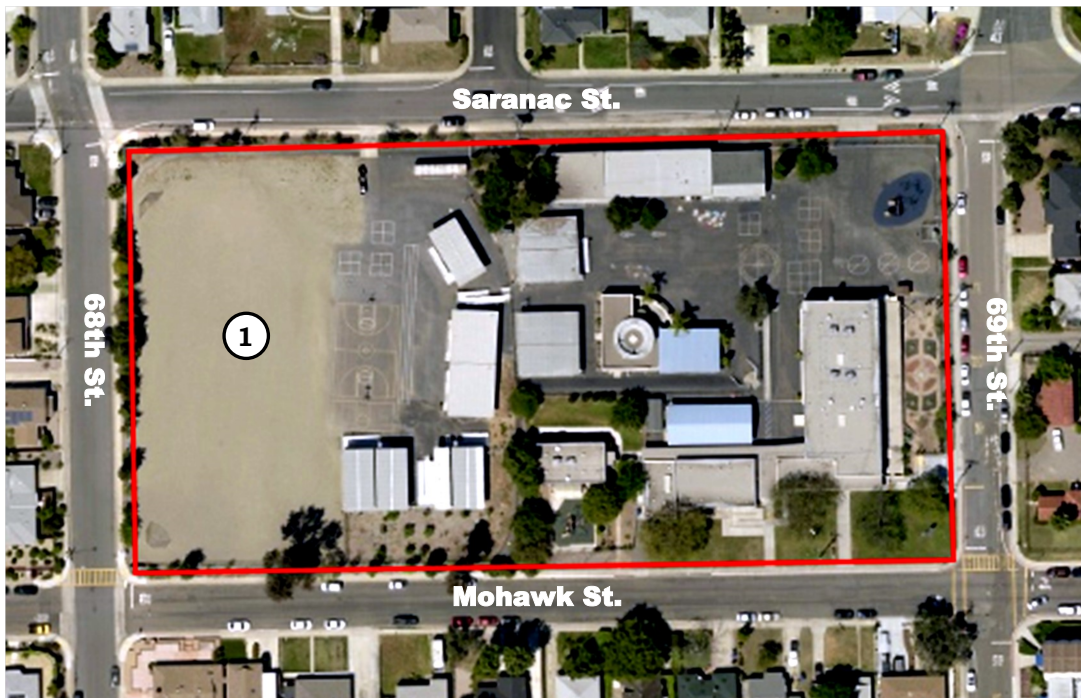




Harriet Tubman Village Charter School

6880 Mohawk St.
San Diego, CA 92115



Year School Opened: 1940 (1993)

Grades: K-8

① Joint Use Field

Since 1993, Harriet Tubman Village Charter School has been proud of their exciting curriculum that serves the “whole” child. Their “village” atmosphere encourages parent and community involvement, as well as partnerships with local businesses. By promoting career and college events, they are instilling a future for the students. The campus serves a student population of approximately 400 from kindergarten through 8th grade.

The campus consists of 4 permanent buildings and 15 portable or relocatable buildings for approximately 32,639 square feet of learning space. These buildings are used for administration offices, classrooms, a cafeteria, and a library. The original building was built in 1937 and replaced in 1940. Additional classroom buildings were added in 1953, and in 2002 the library building was constructed.



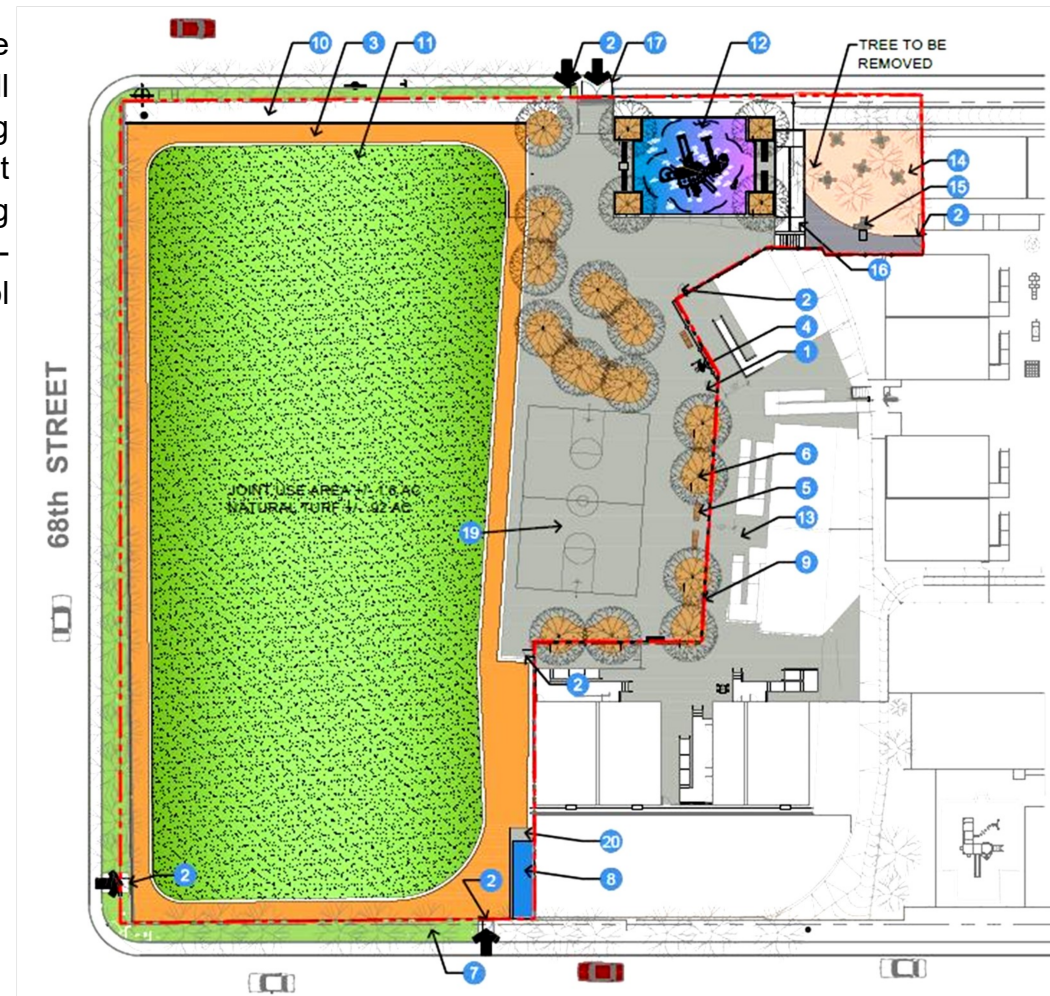
Harriet Tubman Village Charter School Joint Use Field With City of San Diego



Completed: July 2020
Funding: Proposition Z

This Joint Use Agreement (JUA) project with the City of San Diego involves the construction of a Full Amenities Park by the City on the schools existing Decomposed Granite (DG) Field. The agreement allows the park be used by the students during school hours and open as a public park to the community after school, on weekends and during school breaks. The project includes:

- Natural Turf
- Walking/Running DG Path
- Landscaping & Irrigation
- Paved Walks of Travel
- Picnic Tables, benches and drinking fountain
- Play Structure
- Basketball Court
- Security Fencing
- Accessibility Compliance



General Development Plan of the new Joint Use Field Project



Harriet Tubman Village Charter School Joint Use Field With City of San Diego

