

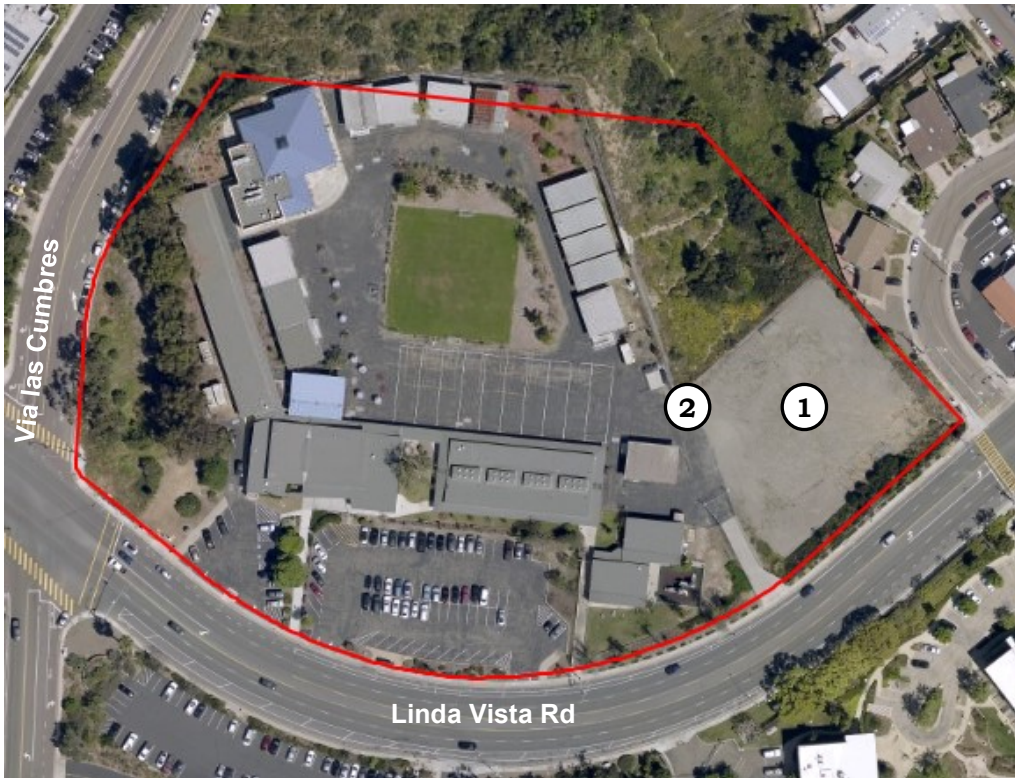


Twain High School

6402 Linda Vista Rd.
San Diego, CA 92111



Sub-district: C
Cluster: Kearny
Year School Opened: 1954
Grades: 9-12



- ① Portable Campus
- ② Empower Charter School

Twain High School is located in the community of Linda Vista near the University of San Diego. The school serves students from all over the San Diego Unified School District. They have designed a program for students that need a second chance for a path towards academic success. Their programs include college-career pathways, individualized instruction, intensive guidance and advisory services. They also offer a Joint Diploma Program with local community colleges where students can take college courses.

The campus originally opened in 1954 with four buildings that served as administration offices, multipurpose room with food services and classrooms. A fifth building was constructed in 2003 for a library and science labs. Over the years, portable classrooms were added as the student population grew.

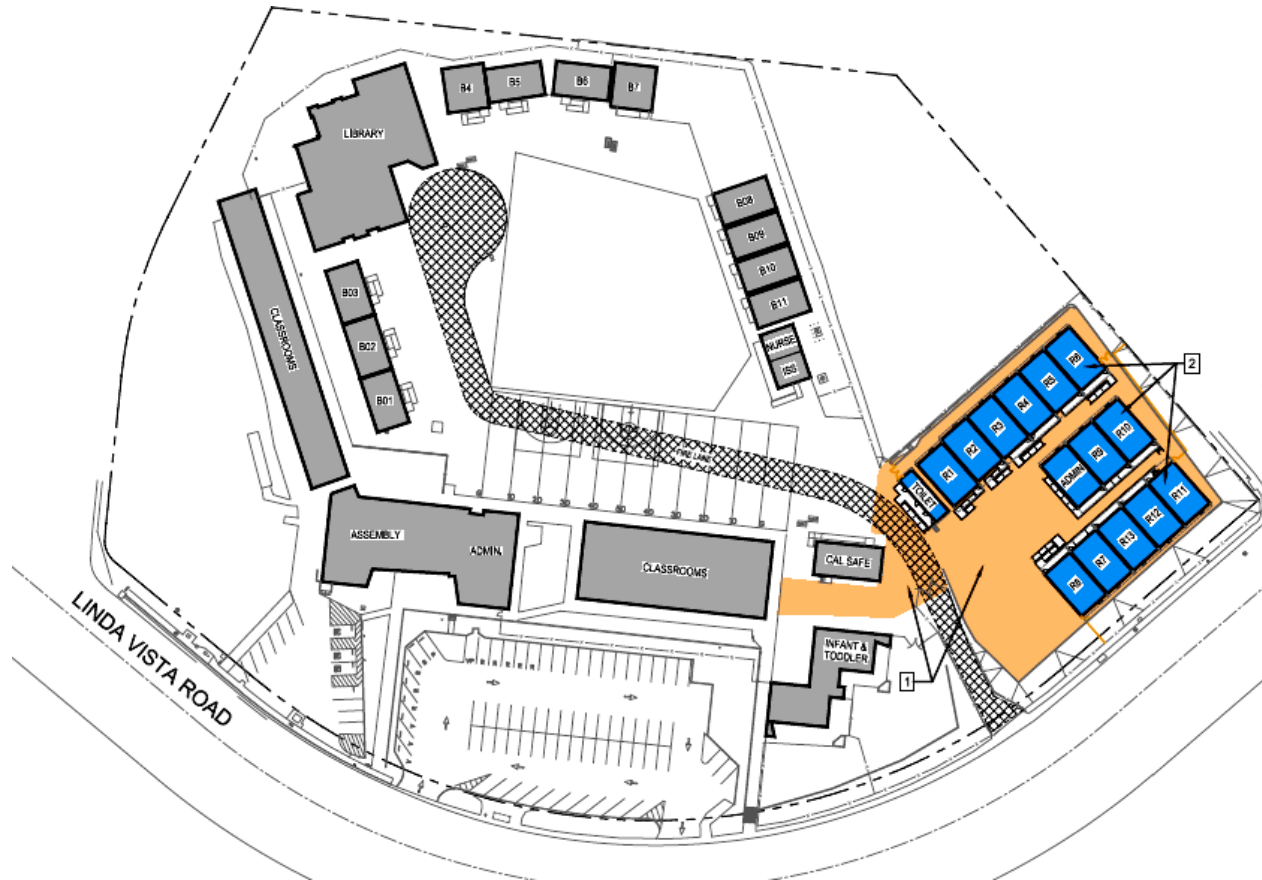


Twain High School Portable Campus



Completed: April 2019
Funding: Proposition S and Z

This project involved moving 15 portable buildings onto the Twain HS campus at the East end of the campus on the field. These buildings will be used for 13 classrooms, an administration office and restrooms. These learning spaces will be used by a charter high school. The project included asphalt paving and full utility services installation.



Site Plan



Twain High School Portable Campus



Portable Campus Restroom



Portable Campus Classrooms



Portable Campus Classrooms



Shaded Exterior Tables

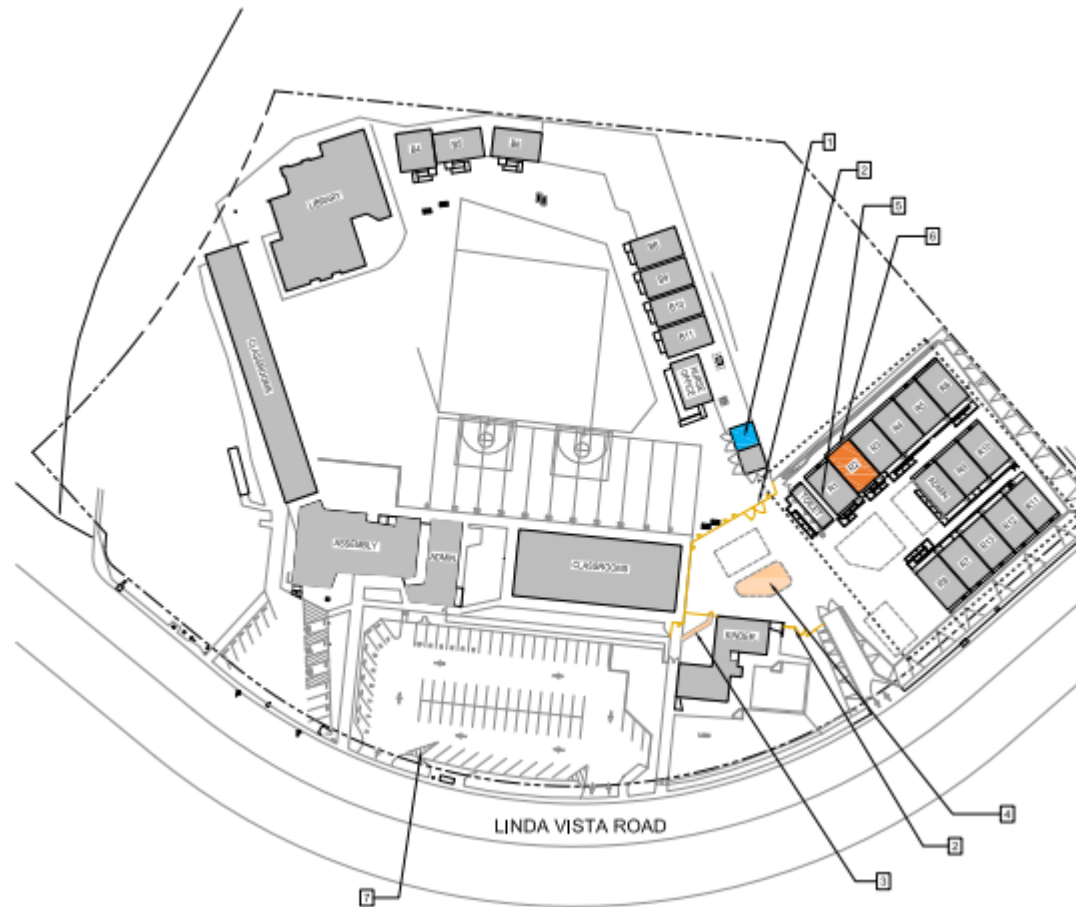


Empower Charter School

Construction Estimated Completion: May 2022

Funding: Measure YY

The scope of work includes fencing to separate the Twain Main High School and Empower Charter School. Labeling of parking spaces will be completed and some interior modular partitions will be installed in one of the relocatable buildings. A playground structure will be installed. Three relocatable buildings will be relocated to Kavod and two portables will be demolished.



Site Plan