



Challenger MS School

10810 Parkdale Ave.
San Diego, CA 92126



Sub-district: A
Cluster: Mira Mesa
Year School Opened: 1987
Grades: 6-8



① Solar Photovoltaic System

Challenger Middle School is in the Mira Mesa Community serving the students in this residential neighborhood. They also accept choice applications from students throughout the district. They are proud to be a California Distinguished School Awardee for three years: 2001, 2009 and 2019.

The 15 acre campus was built in 1990, and it has 99,787 square feet of facility space. There are seven permanent and seven portable buildings that serve as administration offices, classrooms, science labs, a library/learning center, a physical education building with locker rooms, and a performing arts center with classrooms.



Challenger MS Solar Photovoltaic System



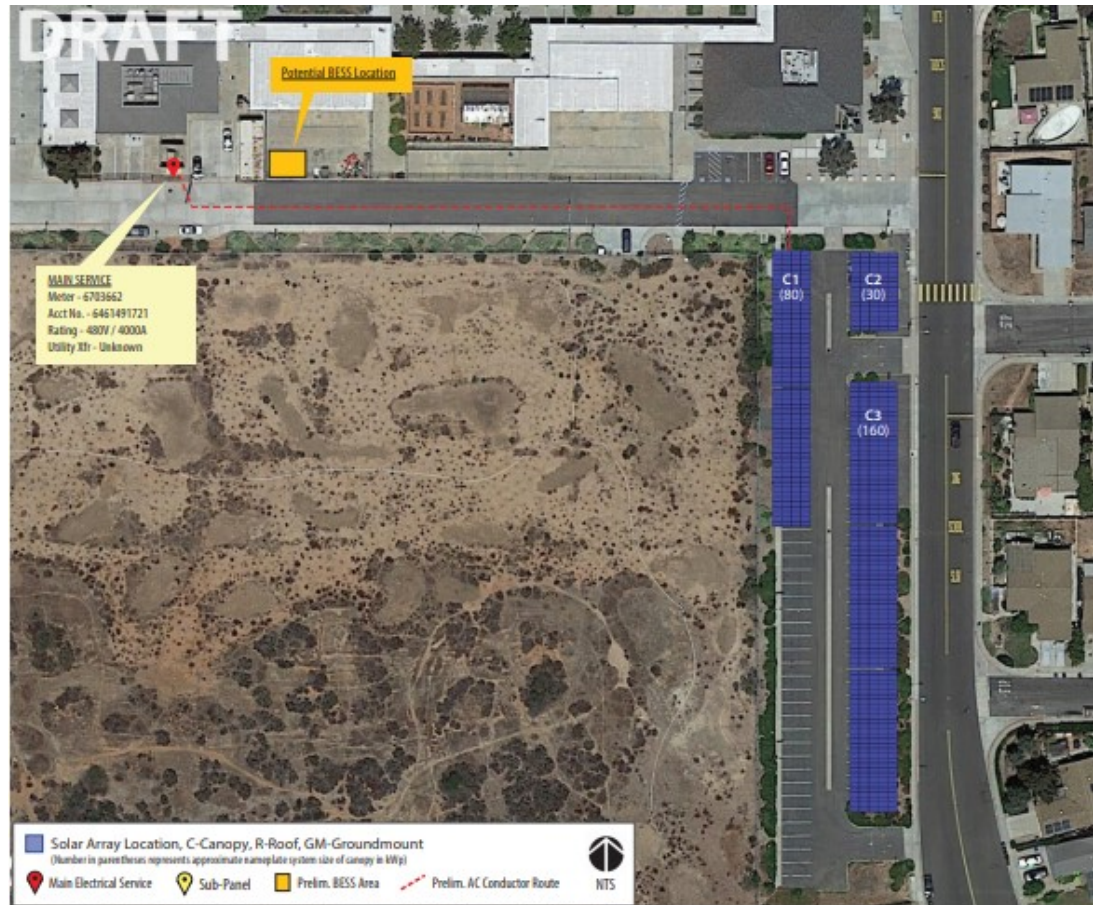
Estimated Construction Completion: September 2022

Funding: Proposition Z

A Solar Photovoltaic System installation will take place at Challenger Middle School. The system for this campus has solar panels that are mounted on tilt elevated canopies at the parking Lot. These canopies provide shade structures and under-mount LED lighting for parking lots. This system will create an energy-efficient and renewable power source. It will deliver a clean energy supply during both the academic year and school vacations.

All elements of installation include, but not limited to:

- Solar PV modules
- Inverters
- All electrical connectors, cabling and components necessary for a complete solar system
- All mounting systems



Proposed solar array placement