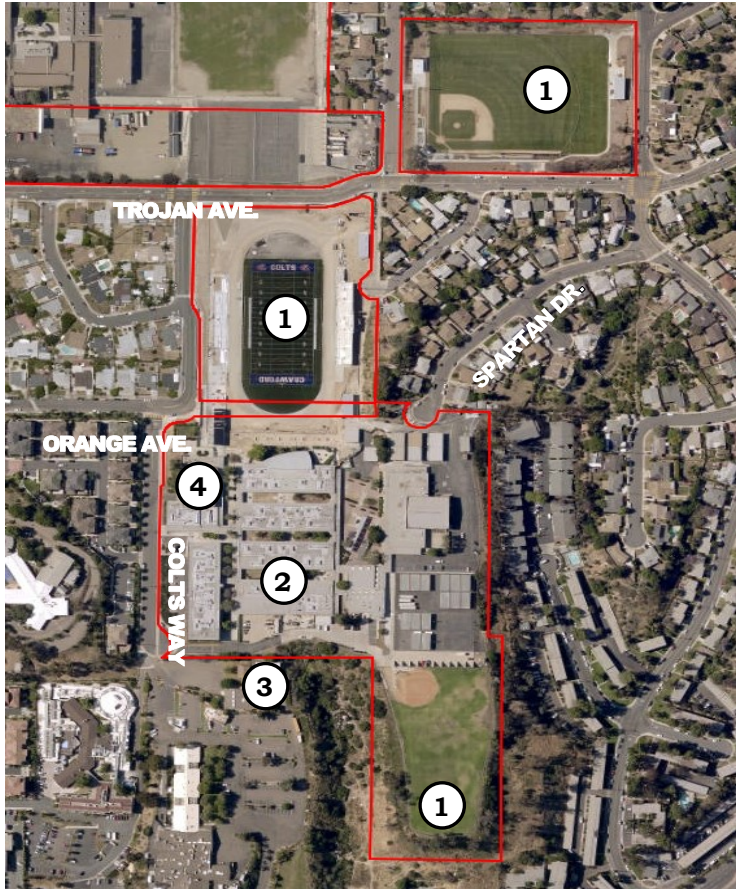




# Crawford High School

4191 Colts Way

San Diego, CA 92115



Sub-district: E

Cluster: Crawford

Year School Opened: 1957

Grades: 9-12

- ① Athletics Facilities Upgrades — New Football Stadium, Baseball Stadium, Softball Stadium, and Tennis Courts
- ② Whole Site Modernization II
- ③ CTE Transportation
- ④ Whole Site Modernization III

Crawford High School is located in the ethnically and culturally diverse neighborhood of El Cerrito and a short distance east of Hoover High School. According to the school website, the California Department of Education named Crawford the most diverse high school in the state. In 2004, Crawford was reorganized into an Educational Complex that included four Small Learning Communities. Due to budget constraints, it was reestablished as a comprehensive campus in fall 2012. The high school celebrated its 50th anniversary during the 2007-08 school year.

The nearly 25-acre campus is situated amongst single family homes and apartment buildings and is located directly south of Horace Mann Middle School. The site consists of 14 permanent, wood framed buildings and 17 portables totaling nearly 200,000 square feet of instructional, administrative, and athletic spaces, including a gym, theater, cafeteria, football stadium, baseball stadium, softball stadium, and tennis courts. The majority of the campus was constructed in 1957; several buildings were later completed in 1962 and 2003.



# Crawford HS Athletics Facilities Upgrades



## Completed:

Football & Baseball Facilities May 2018

Tennis & Softball Facilities June 2018

Funding: Proposition Z

The athletic facilities at Crawford High School are completely upgraded and modernized, with improvements for the football, baseball stadiums, and softball.

The approximately 7-acre football stadium includes a new synthetic turf field, all-weather track, new accessible bleachers, sound system, scoreboard, lighting, and goal posts. In addition, approximately 5,800 square feet of new support facilities will be constructed.



Site plan rendering

The 6.8-acre baseball field was relocated and rebuilt. It received stadium and facility upgrades. An upgraded softball field and new accessible tennis courts area totaling approximately 5-acres will also be constructed.

## Football Field

- Installing accessible bleachers (1,500-seat capacity on home side; 750-seat capacity on visitor side)
- Constructing a press box with elevator for ADA accessibility
- Constructing a new 3,648-square-foot athletic facilities building that includes a ticket booth, restrooms and concessions for home and visitors
- Constructing a new 2,160-square-foot athletic equipment storage facility
- Installing home and visitor entrance gates

## Baseball Field

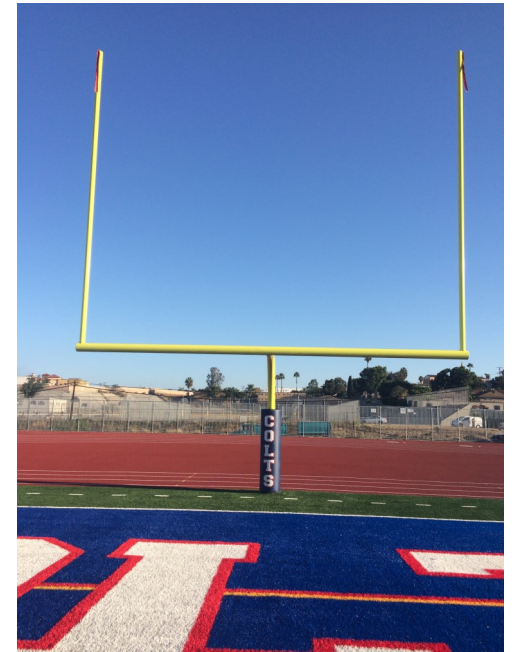
- Installing new accessible bleachers, announcer's booth, and concession stand
- Installing new scoreboard

## Softball Field and Tennis Courts

- Relocating existing softball field and installing new turf softball field
- Constructing new accessible dugouts, bleachers, concession stand, and announcer's booth
- Installing new backstop, fencing, and scoreboard
- Installing new accessible tennis courts



# Crawford HS Athletics Facilities Upgrades



Football Stadium Facilities Upgrades, include new entry, press box, concessions, and bleachers





# Crawford HS Athletics Facilities Upgrades

Football Stadium Facilities Upgrades, include new discus, lighting, ticket booth, and landscaping





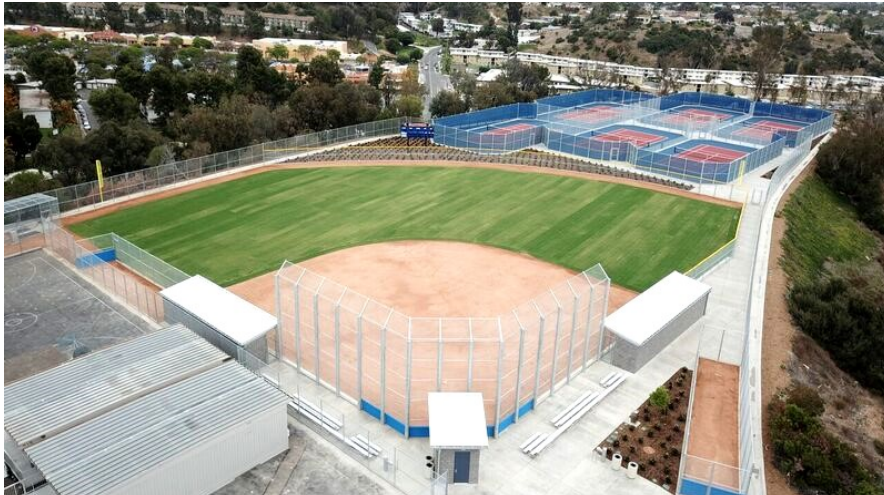
## Crawford HS Athletics Facilities Upgrades

The Baseball Field was relocated with new amenities, such as bleachers, dugouts, entry and landscaping.



## Crawford HS Athletics Facilities Upgrades

The Softball field, Tennis courts and parking lot have been relocated with new facilities. The softball field improvements include fresh turf field; new backstop, scorer's booth, fencing and scoreboard; accessible dugouts and bleachers. The tennis courts include new surfacing, striping, fencing and landscaping. The parking lot includes new surfacing, striping and accessibility.





# Crawford HS Whole Site Modernization



Rendering of new administration, performance art center and classroom three-story building



# Crawford HS Whole Site Modernization II

Completed: August 2020

Funding: Proposition Z

The Whole Site Modernization II Project will provide campus-wide improvements. The site's needs were identified through a comprehensive planning process, which included input from school site representatives, parents, students, and members of the community.

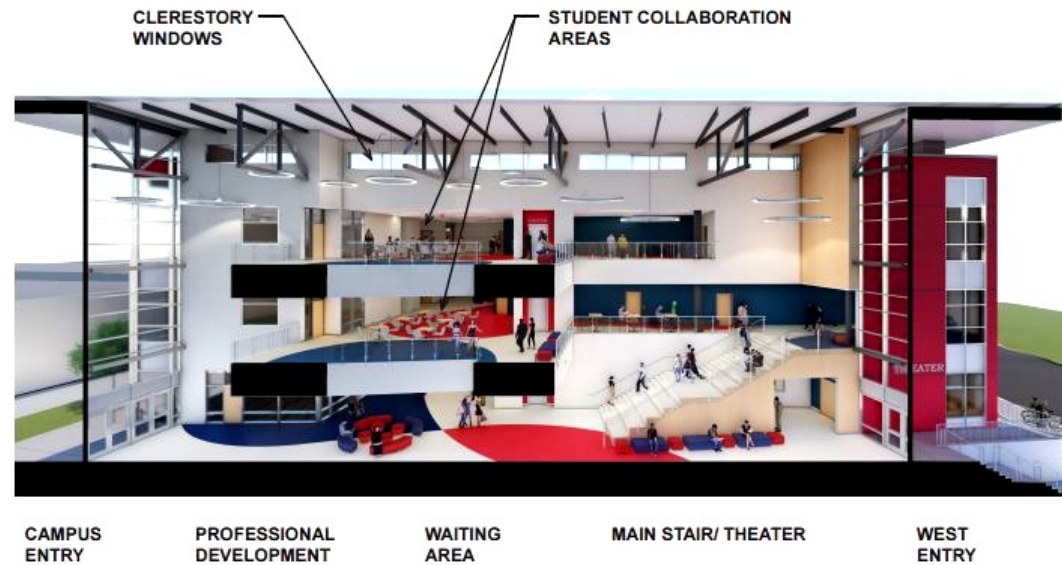
This project will provide improvements to existing classroom spaces, upgrade building systems and replace aged and inefficient buildings by providing opportunities to define and create the architectural image of the campus. The exterior improvements will provide more parking spaces, improve campus safety and security and create multi-functional areas which will promote interaction among students and school personnel. All of these improvements will take place while reducing adverse impacts of school operations on surrounding neighborhood.



Rendering of West entrance to the new three-story campus building



# Crawford HS Whole Site Modernization II



Cross section of the new three-story campus building



Rendering of interior, 2nd floor



Rendering of interior lobby, 1st floor

# Crawford HS Whole Site Modernization II

The following improvements are taking place during this project:

- Preparing and painting the existing walls
- Installing new carpeting
- Painting and/or replacing ceiling tiles where needed
- Installing blinds
- Providing new furniture, fixtures and equipment in these spaces
- Accessibility to all classrooms, labs, restrooms and other school facilities to meet regulations of the American's with Disabilities Act (ADA)
- Removing and replacing old portable classrooms, as well as certifying the remaining portable classrooms
- Installing security lighting and security cameras
- Replacing or upgrading fire alarm and emergency communications systems



New classroom finishes



New science classroom finishes



## Crawford HS Whole Site Modernization II

Additional improvements to be made during this project:

- Renovation work to the gym, restrooms and locker rooms
- New bleachers to meet ADA accessibility regulations
- Repairing or replacing concrete stairs and sidewalks
- Demolition of Building 700
- Construct a new three-story Performing Arts/ Administration and classroom building
  - ◇ Approximately 74,500 square feet
  - ◇ Will include student services, administration offices, 18-20 typical and specialty classrooms including band, chorale and drama classrooms
  - ◇ The theater will consist of 500 seat audience house, stage, control room, modified orchestra pit, ticket booth, scene shop/ storage area, green room, dressing rooms and other similar support spaces



- Demolition of the Building 800, area to be developed into a new staff/visitor parking lot and student drop off/pick up zone



Completed finishes in Cafeteria



## Crawford HS Whole Site Modernization II



Student Store



Improved Exterior Walkway



Kitchen Upgrades



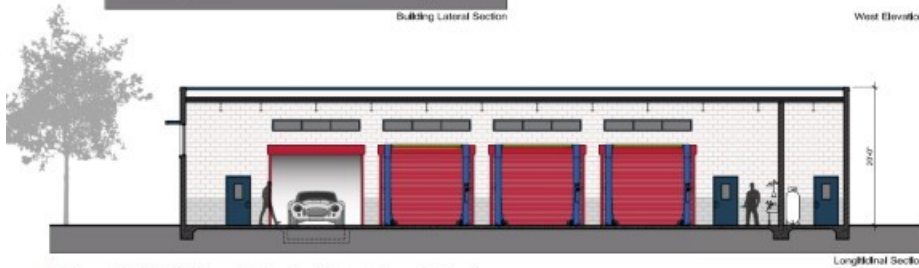
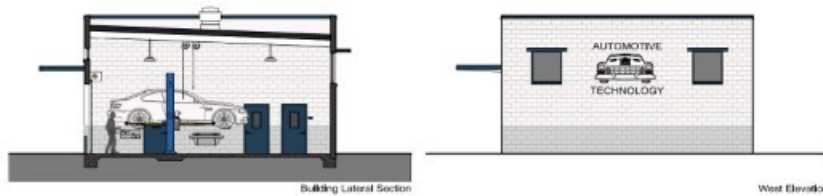
# Crawford HS CTE Transportation



Completed: August 2020

Funding: Proposition Z

This Career Technical Education (CTE) program project will be a new automotive diagnostic, service and repair instructional facility. This new facility emulates current industry standards and provides space for CTE program extension.



New CTE Building, Exterior Elevation & Sections

Career Technical Education Program  
Transportation - Systems Diagnostics, Service, and Repair  
Crawford High School - San Diego Unified School District | 11.17.17

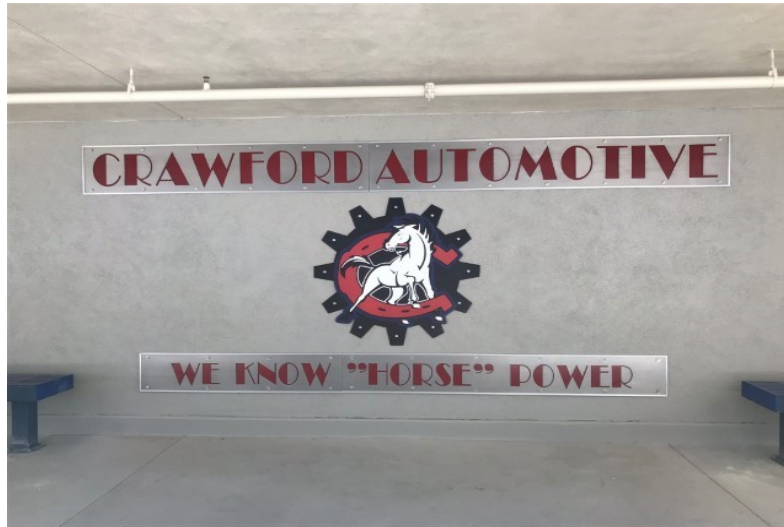


The project features include:

- 3,000 sq. ft. new building and renovated 3,400 sq. ft. auto shop
- 4 service bays, one dedicated as an alignment bay
- 2 bay demonstration areas
- A dedicated engine lab
- A new classroom
- Vehicular circulation and new parking spaces for vehicles being repaired



# Crawford HS CTE Transportation



CTE Automotive Classroom Signage



CTE Automotive Garage



CTE Automotive Classroom



CTE Automotive Interior



## Crawford HS Whole Site Modernization III

Estimated Construction Completion: June 2023

Funding: Proposition Z

This site modernization phase three project at Crawford High School constructs a new three-story, 20-classroom building at the corner of Colts Way and Orange Avenue that provides performing arts and administration spaces. Construction takes place after demolition of the existing auditorium is completed. Other improvements to the school campus include a new parking lot and student drop off/pick up zone once the existing administration building is demolished. The project provides accessibility and other improvements to satisfy California Building Code requirements including fire/life safety, sustainability and energy efficiency.

