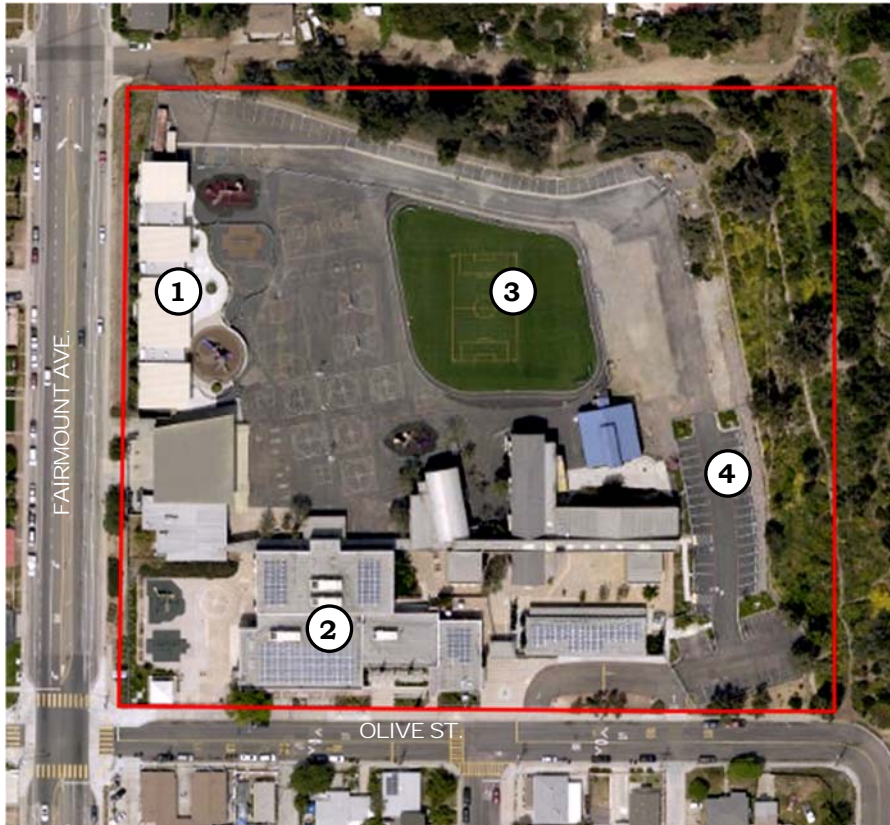




# Hamilton Elementary School

4166 Euclid Ave.

San Diego, CA 92105



Sub-district: E  
Cluster: Hoover  
Year School Opened: 1952  
Grades: K-5

- ① New Kindergarten Classroom Building
- ② Whole Site Modernization
- ③ Synthetic Turf Play Field
- ④ Solar Photovoltaic System

Built in 1952, Hamilton Elementary sits on the northeast corner of Fairmount Avenue and Olive Street in the community of City Heights. Seventy-three percent of Hamilton's students are acquiring English as a second language. Conveniently located near the 15 and 805 freeways, the school borders Swan Canyon, and its proximity makes it conducive to learning about the role of urban canyons in an urban watershed.

The 6.7 acre campus is located in a residential neighborhood and includes six permanent buildings totaling approximately 78,000 square feet of learning and administrative space. Campus facilities include a library, a shade structure, a two-story administrative and classroom building, cafeteria, multipurpose media room, several play structures, a small drop-off/pick-up area off of Olive Street, and a pre-school. A new, recently completed building on the Westside of campus contains four kindergarten classrooms with an adjoining play area.



# Hamilton ES New Kindergarten Classroom Building





## Hamilton ES New Kindergarten Classroom Building

Completed: March 2015

Funding: Proposition S

As part of Hamilton Elementary's Whole Site Modernization, a new, approximately 6,255-square-foot classroom building was constructed on the northeast side of campus. The one-story structure, which houses four individual kindergarten classrooms, replaced four old portable buildings on site. Each classroom has its own bathroom, and the building includes two staff restrooms, two student group restrooms, and two administrative conference rooms. Additionally, landscaping, ornamental fencing, and a new dedicated playground with a play structure and cushioned matting were installed directly adjacent to the classrooms.



Panorama of building façade and playground

# Hamilton ES New Kindergarten Classroom Building



Custom boundary wall



Play structure



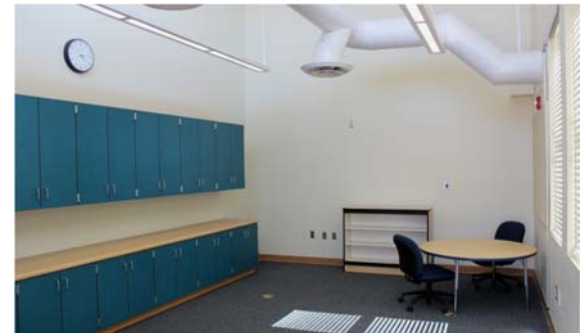
Landscaping and ornamental fencing



Aerial of Hamilton campus and location of new building (far right)



Air conditioning unit



One of two conference rooms

## Hamilton ES New Kindergarten Classroom Building



Kindergarten classroom setup



Kindergarten classroom setup



Kindergarten bathroom example



Kindergarten classroom setup



# Hamilton ES Whole Site Modernization



Front gate with upgraded security and custom pavers



New entrance to office

Completed: March 2015  
Funding: Proposition S

The majority of buildings on the Hamilton Elementary campus were built during the 1950s. This project was intended to modernize the site.

## The Whole Site Modernization Project

- Campus-wide security lighting that can be remotely operated by the Emergency Operations Center
- Security fencing to reduce vandalism and intrusion
- Restored original school entrance, and enhanced security, landscaping, and aesthetics
- Renovated existing restrooms
- Improved accessibility to all classrooms, labs, restrooms and other school facilities to comply with Americans with Disabilities (ADA) Act regulations
- New permanent kindergarten building replacing four old portable classrooms
- Upgraded multipurpose room
- Electrical upgrades, repaired hardscape, and repaired building finishes
- Site-wide air conditioning
- Expanded staff parking at the southeast corner off Olive Street

# Hamilton ES Whole Site Modernization



New landscaping and ornamental fencing near main office



Decorative trellises adjacent to office entrance



Trellises and seating areas along Olive Street



Remodeled front office

# Hamilton ES Whole Site Modernization



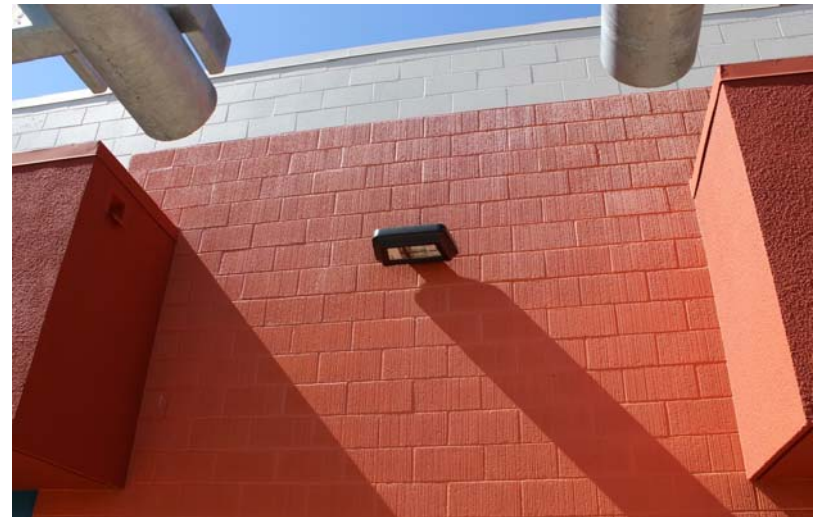
Staff parking entrance off of Olive Street



Expanded staff parking lot



Additional staff parking



Security lighting example on auditorium exterior



# Hamilton ES Whole Site Modernization



Exterior building security lighting



Security lighting in classroom building hallway



Security lighting on lunch court overhang



Air conditioning units

## Hamilton ES Whole Site Modernization



Example of air conditioning ducts found in every classroom



Upgraded first and second grade girls bathroom



Upgraded first and second grade boys bathroom



Remodeled boys bathroom

# Hamilton ES Whole Site Modernization



Remodeled girls bathroom



Example of ADA improvement



ADA ramp leading to administration building



Shade structure on southwest side of campus



# Hamilton ES Synthetic Turf Play Field



Completed: June 2016  
Funding: Proposition Z

A portion of the dirt field was replaced with a synthetic turf play field surrounded by an asphalt track for students to use to jog/run around the new field. Additional improvements included grading and proper drainage.



Original dirt field



Aerial of new synthetic turf play field with asphalt track



# Hamilton ES Solar Photovoltaic System



Construction Estimated Completion: Fall 2022  
Funding: Proposition Z



Proposed solar array placement

A Solar Photovoltaic System installation will take place at Hamilton Elementary School. The system for this campus has solar panels that are mounted on tilt elevated canopies within the existing parking lot and playground. These canopies provide shade structures and undermount LED lighting for parking lots. This system will create an energy-efficient and renewable power source. It will deliver a clean energy supply during both the academic year and school vacations.

All elements of installation include, but not limited to:

- Solar PV modules
- Inverters
- All electrical connectors, cabling and components necessary for a complete solar system
- All mounting systems