



Millennial Tech Middle School

1110 Carolina Lane
San Diego, CA 92102



Sub-district: E

Cluster: Lincoln

Year School Opened: 2008

Grades: 6-8



- ① Shared-use, Multi-sport Field
- ② Bus Turnaround
- ③ Three-story Classroom Building

Millennial Tech Middle School (MTM) is a magnet school that focuses on science, technology, engineering and mathematics (STEM) education. The school is located on a campus east of Gompers Charter Middle School in the Chollas View neighborhood of Southeastern San Diego. In 2015, MTM received a grant from the state’s Water Resources Control Board, in partnership with Groundwork San Diego-Chollas Creek, to install storm water retention/reuse and water conservation management practices. Educators use the project to teach students about drought and conservation efforts, as well as to promote conservation technology career pathways.

As of Fall 2008, the 6.6-acre campus consisted of 11 permanent buildings, six of which were completed in 1962 when the original school was completed. Since then, two buildings were constructed in 1997, and the most recent three-story state of the art classroom building was completed in 2015. There are also seven portable classroom buildings. The remaining part of the campus consists of a 4.5-acre shared-use, multi-sport field that includes a baseball diamond and a combination football and soccer field. The school offers a bus turn-around that was completed in 2012 as well.



MTM MS Shared-use Field & Bus Turnaround Area



Completed: July 2012
Funding: Proposition S

Completed: October 2012
Funding: Proposition S

A new bus turnaround/pick-up/drop-off area and two-way road was constructed to alleviate traffic on Carolina Lane and provide easier access to the school. The new turnaround accommodates busing required for MTM's daily functions, as well as possible sporting events at the adjacent shared-use field. Recently, striping and speed bumps were added.

A 4.52-acre shared-use turf field was installed at the MTM and Gompers Preparatory Academy site. The field includes a full football/soccer field, as well as a full baseball facility and an open area for multipurpose use. Improvements included grading and subterranean sprinklers to help cool the field. The facility is shared equally by MTM and Gompers.



Turnaround/pick-up/drop-off area aerial pre-striping



Baseball backstop



Football/soccer field



Turnaround with new striping and installed speedbumps



Shared-use field aerial

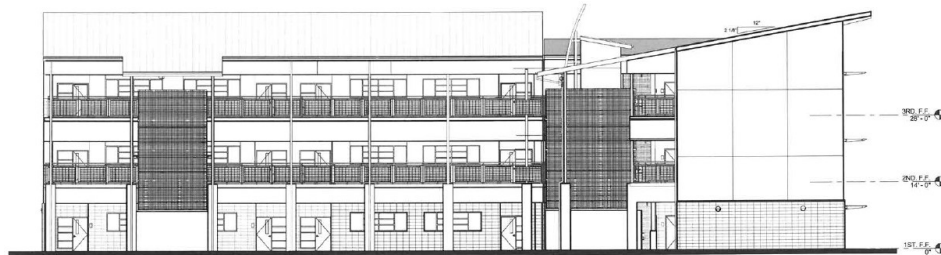


MTM MS Three-story Classroom Building

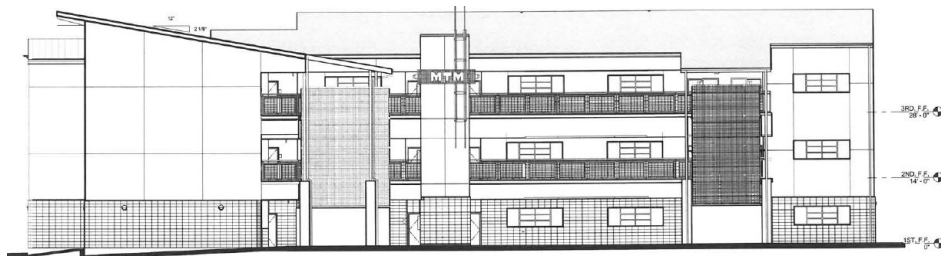




MTM MS Three-story Classroom Building



North elevation rendering



East elevation rendering

Completed: January 2015

Funding: Proposition S

A new 38,322-square-foot, three-story classroom building was constructed on the northwest side of campus to replace portable classrooms and to accommodate increased enrollment at Millennial Tech Middle School. The 16-classroom facility houses four science classrooms and a broadcast technology center where students are able to gain hands-on experience with state-of-the-art, multimedia equipment.

Three-story Classroom Building Features

- 16 classrooms
- Energy-efficient and sustainable design features such as recycled construction materials, drought tolerant landscaping, and natural lighting
- i21 technology infrastructure
- Courtyard
- Americans with Disabilities Act (ADA) accessibility upgrades
- Elevator
- Restrooms

MTM MS Three-story Classroom Building

1. Sustainable Sites — Outdoor Surfaces & Spaces

2. Water — Outdoor Systems

2. Water — Indoor Systems

3. Indoor Environment Quality

3. Indoor Air Quality and Thermal Comfort

Material & Waste Management

- 93.7% construction site recycle rate
- Materials with recycled content: Insulation, ceiling tiles, aggregate base, structural steel, and case work.

Energy — Superior energy performance 27.9% better than title 24

1. Reduce heat islands—cool roofs. Reduced building footprint. Clean air parking stalls reserved. **2.** Drought tolerant plants and high-efficiency irrigation, including drop and bubblers. **2.** Waterless urinals, high-efficiency toilets and plumbing fixtures. **3.** View window and natural lighting. Lighting design with high quality direct/indirect very high levels of controllability. **4.** Minimum HVAC and construction Indoor Environmental Quality (IEQ) requirements. ASHRAE 55 (Thermal Environmental Conditions for Human Occupancy) thermal comfort code compliance and moisture control. HVAC system with enhanced filtration. Low emitting materials: adhesives, sealants, paints, coatings, flooring systems, and composite wood. Controllability of systems: each classroom is a separate zone and has separate outside air. Chemical and pollutant source controlled covered walkways. Mercury reduction: low mercury lamps fixtures. Improved acoustical performance.

MTM MS Three-story Classroom Building



Aerial of building with view of courtyard



Southern wing



View of structure's three stories and staircase access



Northwest wing and courtyard

MTM MS Three-story Classroom Building



Typical classroom layout



Classrooms feature i21 components, such as interactive whiteboards



Science classroom

MTM MS New Three-story Classroom Building



Broadcast studio control desk



Bluescreen backdrop and camera



Broadcast studio classroom