

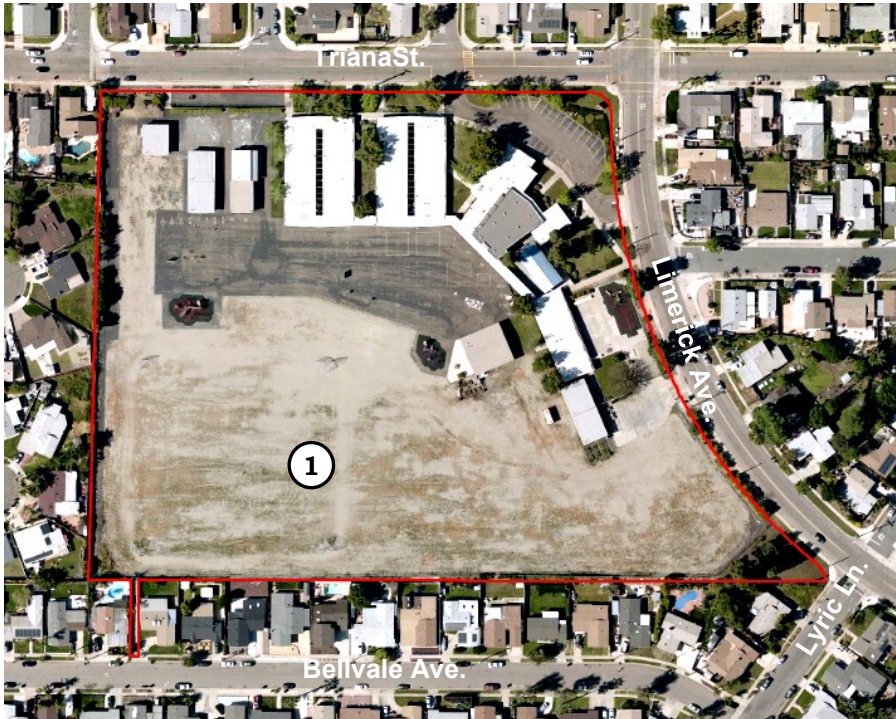


Sequoia ES School

4690 Limerick Avenue
San Diego, CA 92117



Sub-district: A
Cluster: Madison
Year School Opened: 1961
Grades: K-5



① Joint Use Field

Sequoia Elementary School is located in the Clairemont residential community. This school has a Visual and Performing Arts magnet program, providing instruction in art, music and theater. The diverse student population has an average of 200 from pre-school to 5th grade. They have a strong parent community that provides extra programs during the school year promoting home to school connections.

The campus has approximately 37,000 square feet of facilities consisting of administration offices, classrooms, a library, a multipurpose room with food services. Four original buildings constructed in 1960-1961 and seven portable classroom buildings were added over time due to increasing the student population. In 2005, a library building and covered lunch court were built. It is projected that in 2020, a Joint Use Field will be added on the Decomposed Granite (DG) field providing a park for the community after school hours.



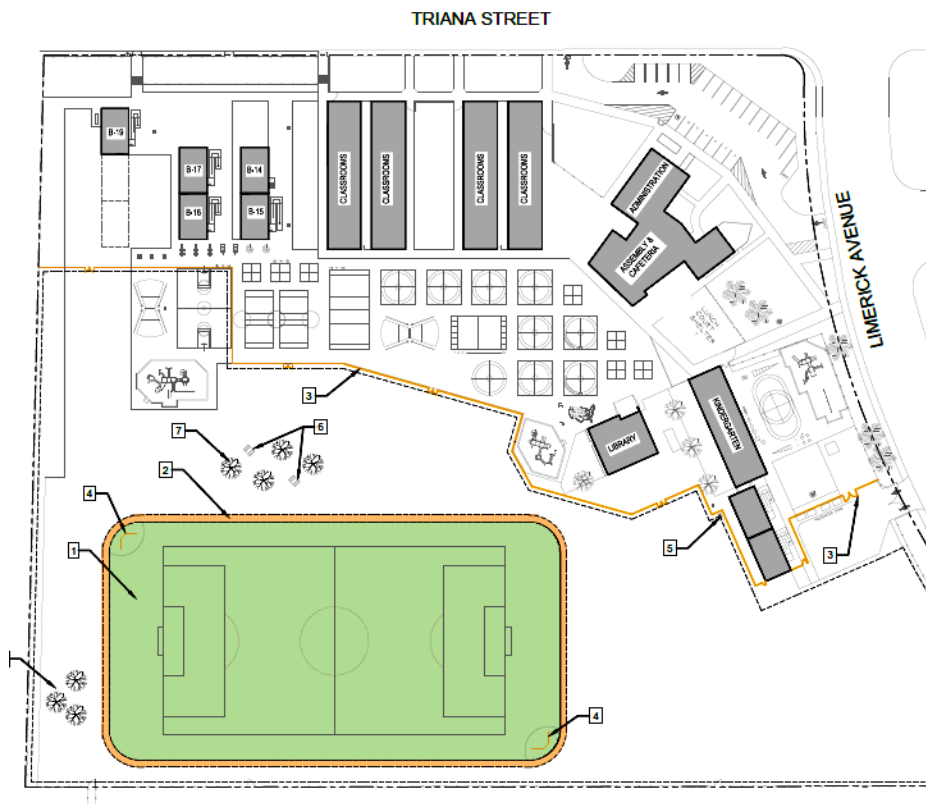
Sequoia ES Joint Use Field With the City of San Diego



Completed: March 2022

Funding: Proposition Z

This Joint Use Agreement (JUA) project with the City of San Diego involves the construction of a full amenities park by the City on the schools existing Decomposed Granite (DG) Field. The agreement assures the park is used by the students during school hours and opens as a public park after school, on weekends and during school breaks. The project includes:



Site Plan

- New Natural Turf
- Stabilized DG Running Track
- Landscaping & Irrigation
- New Trees
- New Backstops
- New Drinking Fountain
- Accessibility Compliance
- Security Gates and Fencing



Sequoia ES Joint Use Field With the City of San Diego



Sequoia 7/25/2021 7 AM



Joint Use Field